

OCEANVIEW

APARTMENT HOMES



2



2



917sqft

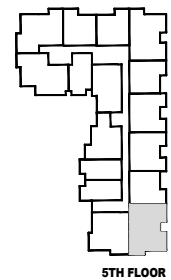
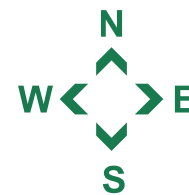
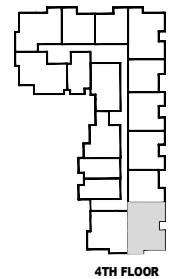
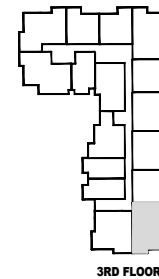
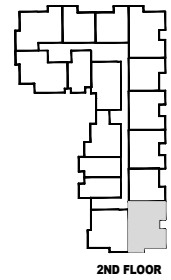
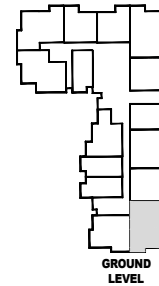
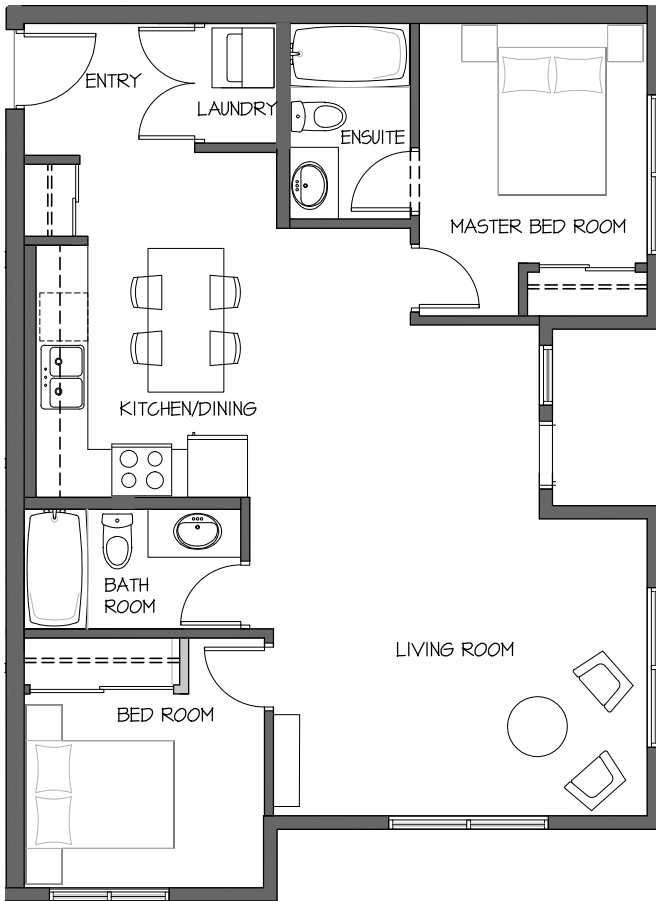


0

A1 FLOOR PLAN

850 Dogwood Street, Campbell River, BC

www.oceanviewapartmenthomes.com



Western Canadian
PROPERTIES GROUP

FOR MORE INFORMATION, PLEASE CONTACT
PARALLEL 50 PROPERTY MANAGEMENT
(250) 286-0110 OR LEASING@OCEANVIEWAPARTMENTHOMES.COM

Western Canadian Properties Group XIV Limited Partnership, reserves the right to modify or change plans, specifications, and features without notice. Floorplans, elevations, room sizes, decks, and square footages are approximate and may vary from the actual built home. Floorplans may be oriented differently than displayed. Furniture and décor items are shown as an example only and are not included. The calculations and assumptions listed are estimates only, based on information and sources that have been deemed reliable, and in no way reflect with absolute certainty the future performance of the property. Purchasers are responsible for performing their own evaluation and forecasts and should seek independent financial advice. Vacancy rates and mortgage rates are subject to change. This is not an offering for sale. Any such offering can only be made with the applicable Disclosure Statement. E&OE.

OCEANVIEW

APARTMENT HOMES



2



2



849sqft

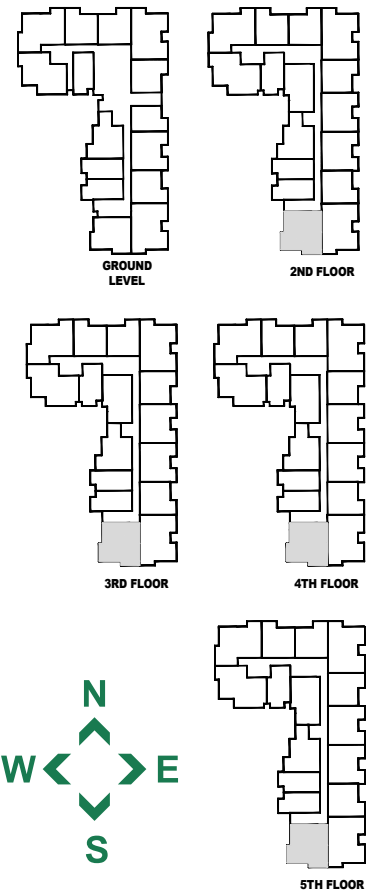
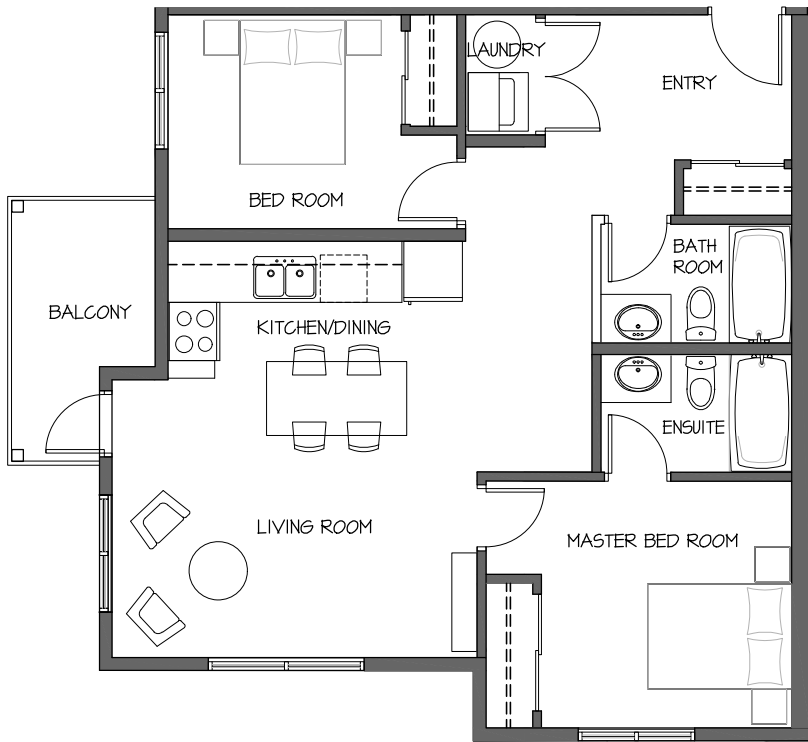


0

A2 FLOOR PLAN

850 Dogwood Street, Campbell River, BC

www.oceanviewapartmenthomes.com



Western Canadian
PROPERTIES GROUP

FOR MORE INFORMATION, PLEASE CONTACT
PARALLEL 50 PROPERTY MANAGEMENT

(250) 286-0110 OR LEASING@OCEANVIEWAPARTMENTHOMES.COM

Western Canadian Properties Group XIV Limited Partnership, reserves the right to modify or change plans, specifications, and features without notice. Floorplans, elevations, room sizes, decks, and square footages are approximate and may vary from the actual built home. Floorplans may be oriented differently than displayed. Furniture and décor items are shown as an example only and are not included. The calculations and assumptions listed are estimates only, based on information and sources that have been deemed reliable, and in no way reflect with absolute certainty the future performance of the property. Purchasers are responsible for performing their own evaluation and forecasts and should seek independent financial advice. Vacancy rates and mortgage rates are subject to change. This is not an offering for sale. Any such offering can only be made with the applicable Disclosure Statement. E&OE.

OCEANVIEW

APARTMENT HOMES



2



2



921sqft

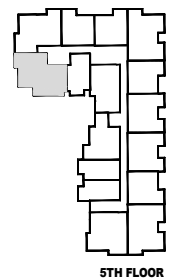
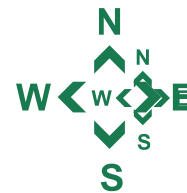
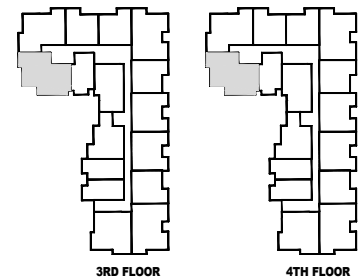
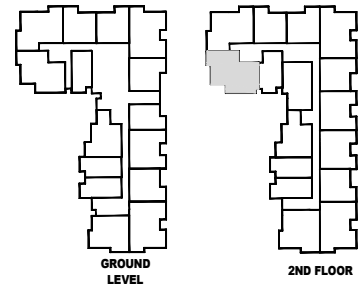
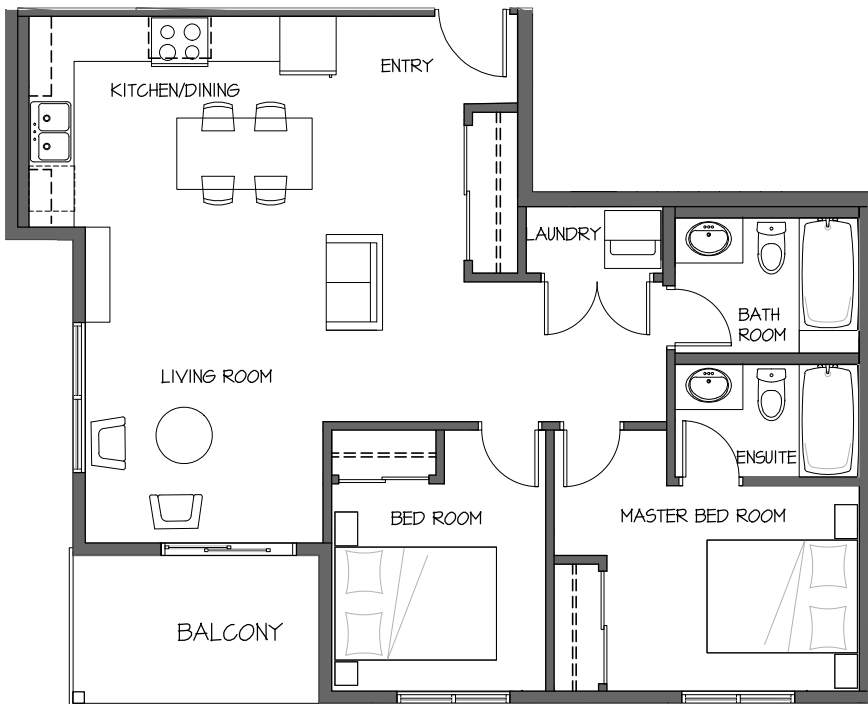


0

A3 FLOOR PLAN

850 Dogwood Street, Campbell River, BC

www.oceanviewapartmenthomes.com



Western Canadian
PROPERTIES GROUP

FOR MORE INFORMATION, PLEASE CONTACT
PARALLEL 50 PROPERTY MANAGEMENT

(250) 286-0110 OR LEASING@OCEANVIEWAPARTMENTHOMES.COM

Western Canadian Properties Group XIV Limited Partnership, reserves the right to modify or change plans, specifications, and features without notice. Floorplans, elevations, room sizes, decks, and square footages are approximate and may vary from the actual built home. Floorplans may be oriented differently than displayed. Furniture and décor items are shown as an example only and are not included. The calculations and assumptions listed are estimates only, based on information and sources that have been deemed reliable, and in no way reflect with absolute certainty the future performance of the property. Purchasers are responsible for performing their own evaluation and forecasts and should seek independent financial advice. Vacancy rates and mortgage rates are subject to change. This is not an offering for sale. Any such offering can only be made with the applicable Disclosure Statement. E&OE.

OCEANVIEW

APARTMENT HOMES



2



2



869sqft

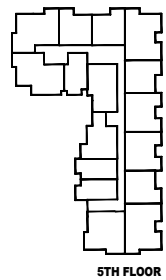
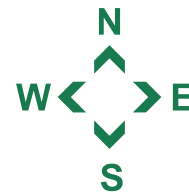
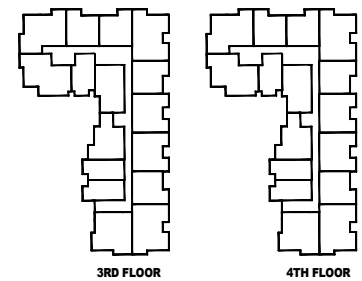
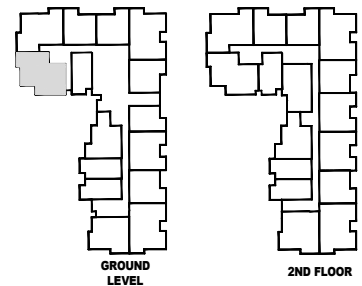
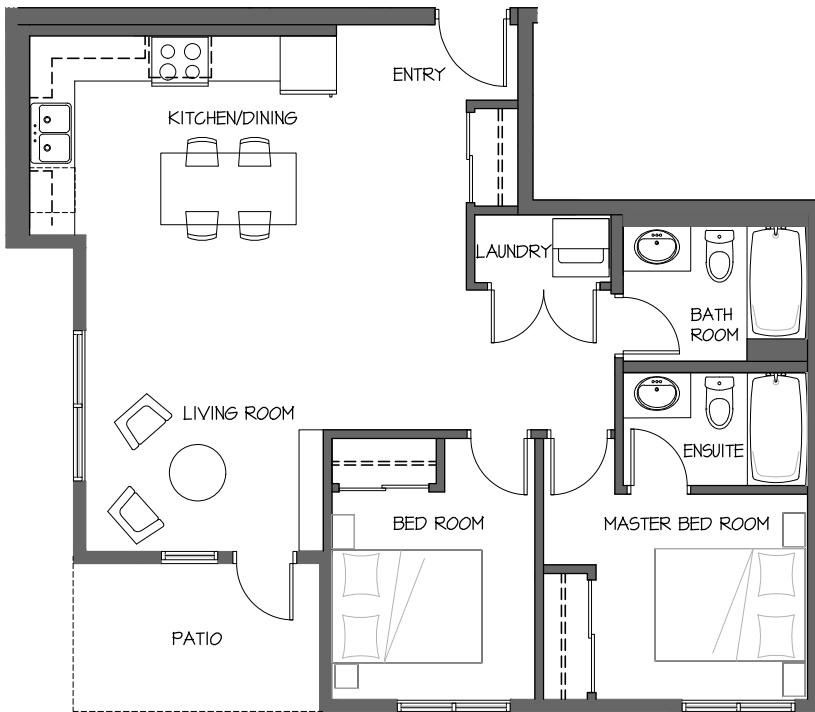


0

A7 FLOOR PLAN

850 Dogwood Street, Campbell River, BC

www.oceanviewapartmenthomes.com



Western Canadian
PROPERTIES GROUP

FOR MORE INFORMATION, PLEASE CONTACT
PARALLEL 50 PROPERTY MANAGEMENT

(250) 286-0110 OR LEASING@OCEANVIEWAPARTMENTHOMES.COM

Western Canadian Properties Group XIV Limited Partnership, reserves the right to modify or change plans, specifications, and features without notice. Floorplans, elevations, room sizes, decks, and square footages are approximate and may vary from the actual built home. Floorplans may be oriented differently than displayed. Furniture and décor items are shown as an example only and are not included. The calculations and assumptions listed are estimates only, based on information and sources that have been deemed reliable, and in no way reflect with absolute certainty the future performance of the property. Purchasers are responsible for performing their own evaluation and forecasts and should seek independent financial advice. Vacancy rates and mortgage rates are subject to change. This is not an offering for sale. Any such offering can only be made with the applicable Disclosure Statement. E&OE.